

Casework Workshop – New Features

Enhancements to the RevitWorks Casework Workshop

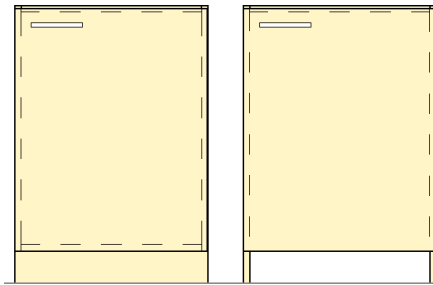
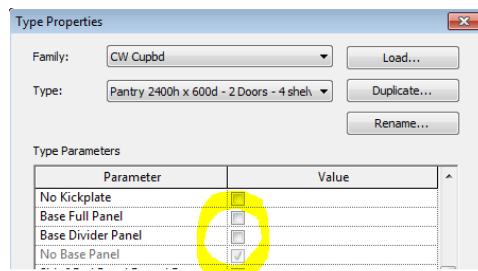
New Features introduced in V3

Compatible with all flavours of Revit from 2013 onward.

New Features

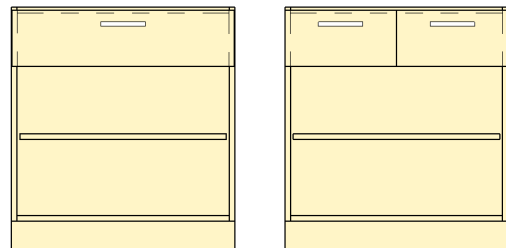
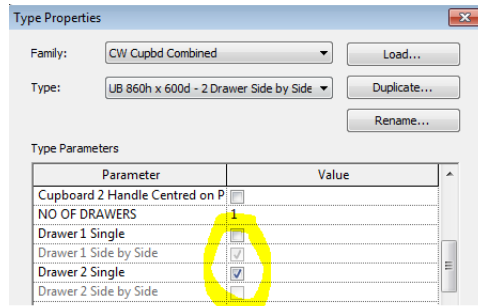
- **Turn off Carcase Base** - 5 new preconfigured examples included.

The base panel of the carcass can now be turned off in all of the Casework families.



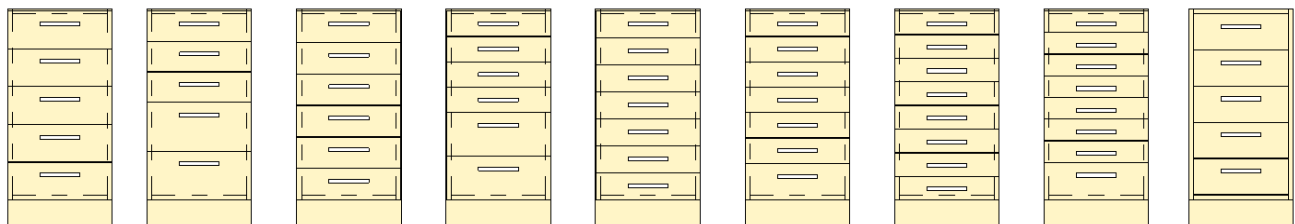
- **Side-by-Side Drawers** added - 3 new preconfigured examples included.

The combined cupboard family (CW Cupb Combined.rfa) now has options to have two side-by-side drawers.



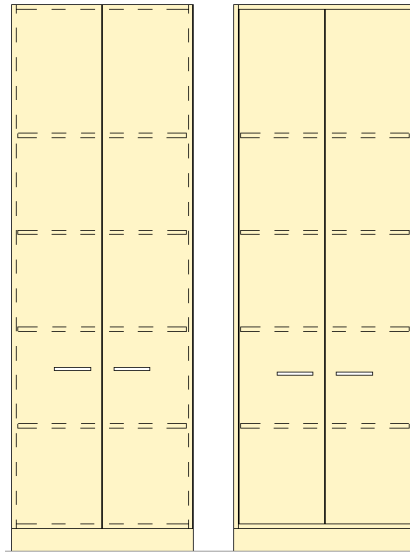
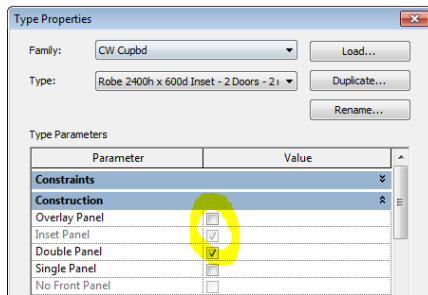
- **Drawer Bank** added - 1 new family, 9 new preconfigured types.

A new family of drawers (CW Drawer Bank.rfa) has been added allowing up to 8 drawers where all drawer heights can be controlled separately or alternatively setup to be equal heights. Note that this is additional to the drawer unit family that is already part of the Workshop.



- **Inset Panel Options** added - 12 new preconfigured examples included

All cupboards now have the option to change the overlay doors and drawers to inset.

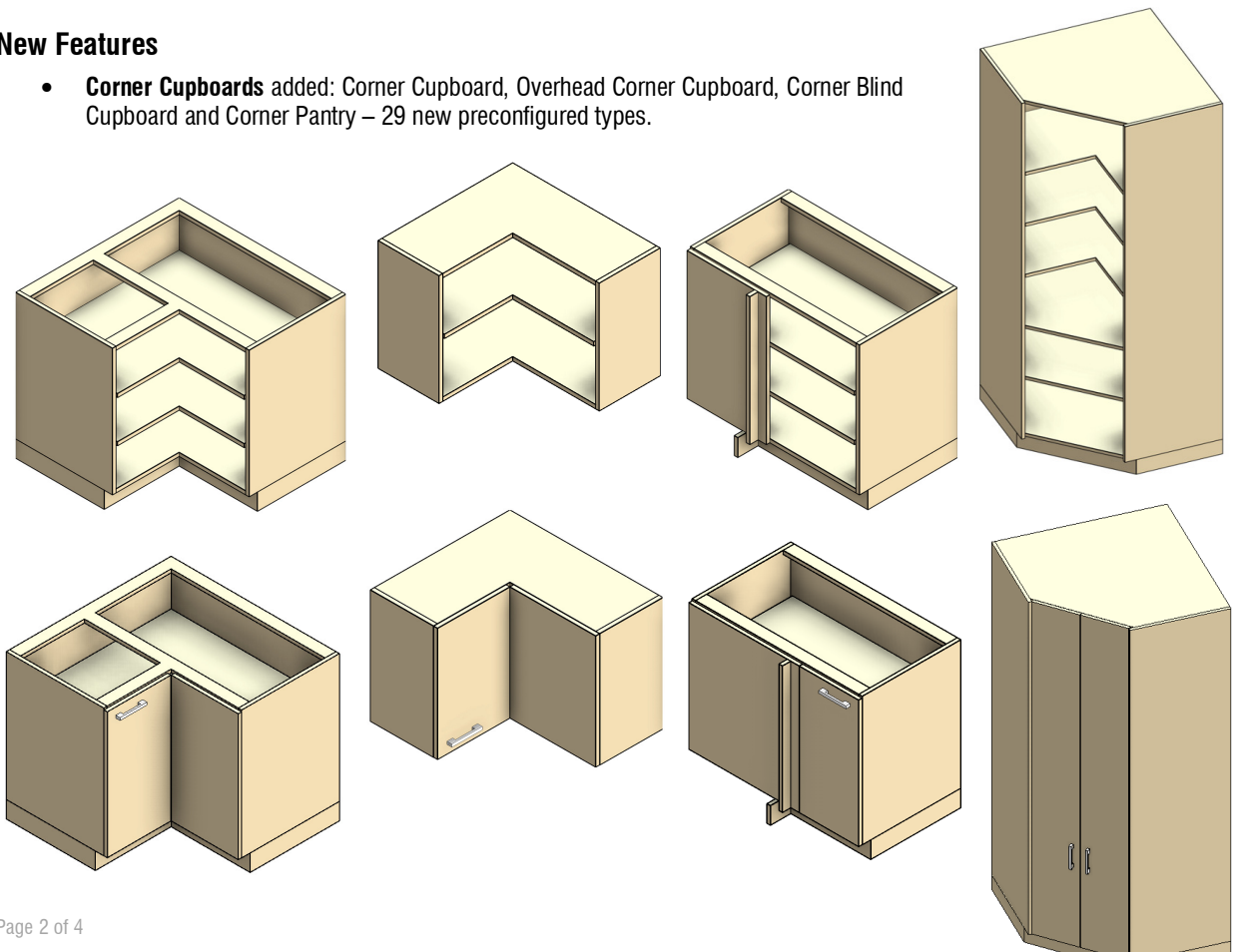


New Features introduced in V2

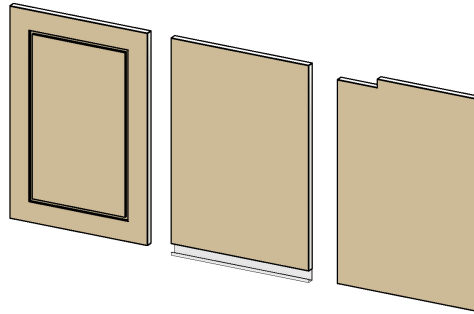
Compatible with all flavours of Revit from 2012 onward. The Casework Workshop has had a makeover. There are more configurations and different sub components. Subcomponents (Panels, Handles etc) from the version 1 workshop are incompatible with the version 2 workshop. If you need help converting your subcomponents to version 2, please email us at support@revitworks.co.nz.

New Features

- **Corner Cupboards** added: Corner Cupboard, Overhead Corner Cupboard, Corner Blind Cupboard and Corner Pantry – 29 new preconfigured types.



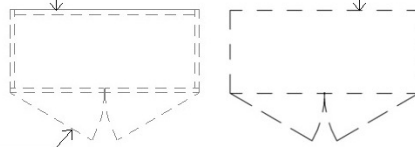
- **Imperial Version** added: Preconfigured types have rational “Decimal Inch” dimensions (not hard converted metric dimensions).
- **Bi-fold door** swing options added to standard, combined, overhead cupboards and corner pantry – 7 new preconfigured types.
- **Panels** added: Fluted, Flush-Strip Handle to Base (for overhead cupboards) and Flush Cut-out Handle



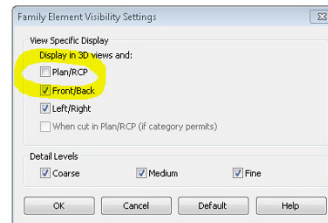
- **Overhead Cupboards** are now separate families to allow for easier graphical manipulation:

TO ACHIEVE THIS LOOK:
USE VISIBILITY GRAPHIC
FILTERS.

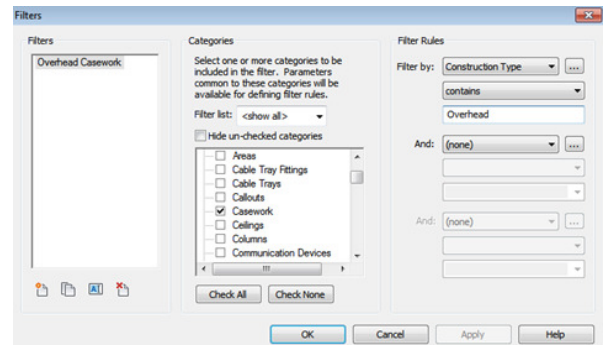
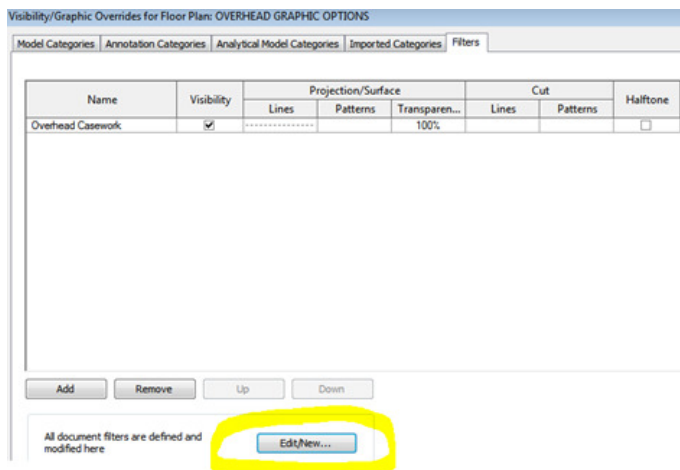
TO TURN OFF THE DOOR
SWINGS, SET THE "Swing
Angle" PARAMETER TO "0"
DEGREES.



- TO ACHIEVE THIS LOOK:
- EDIT THE FAMILY
 - IN A 3D VIEW SELECT ALL THE COMPONENTS
 - UNDER VISIBILITY SETTINGS, UNTICK "PLAN/RCP"



To use visibility graphics as above, go to the visibility graphics (VG) of the view and add a filter as below:



Enhancements

- All panels can now have gap to top allowing for finger recesses to any panel – control through “Panel Top Tolerance” parameter within the casework families.
- Swings are now not nested within panels allowing for easier creation of panels without the chance of breaking the swing.
- Low detail casework kick-plate height and setback parameters added and division line bug fixed (when changing depth of unit).
- All materials are now named with ‘Finish’ or ‘Material’ in the name for consistency. (“Finish” are instance based, “Material” are type based) .
- All material Instance Parameters are now Shared Parameters to allow for completely consistent swapping. Example: If you have changed the Instance Parameter “Front Panel Finish” value of a casework module (i.e. to “Red Paint”), it will now be retained when swapping in a completely different casework family.